

## New Talent residencies 2016

Join Watershed's Pervasive Media Studio and become part of a community of over 100 artists, creative companies, technologists and researchers exploring new frontiers in experience design and creative technologies.



*Beacon Choir by New Talent Resident Thomas Williams on display at The Rooms. Photo by Max McClure*

### **The opportunity:**

We are looking for talented and ambitious individuals at an early stage in their professional development, looking to explore ideas related to creative technology within an open and inspiring Studio community.

### **What's on offer?**

- 3 months in residence at the Pervasive Media Studio, at least 3 days per week
- A bursary of £2000 plus a £500 materials budget (managed by Watershed)
- A week of specially tailored activity at the start of the residency to help you to get the most out of your time with us
- Hand-picked mentor drawn from the Studio community
- Time with the other New Talent residents, as well as with Watershed's Producers and Creative Technologist to develop your ideas
- Sharing and showcase opportunities at appropriate stages in the residency



*"I feel lucky to be part of this remarkable creative network, discovering amazing projects that are happening, as well as meeting the people behind them. This has helped me understanding the work involved in making my own projects happen."*

*Roz Dean, New and Emerging Talent resident 2015*



*"we thought we had some pretty wild ideas about what we wanted bionic hands to look like, but the amputees there [at the workshop we held as part of the residency] were even more adventurous"*

*Samantha Payne, Open Bionics, New and Emerging Talent resident 2015*

### **This year we are delighted to offer three New Talent residencies:**

#### **New Talent residency one: Making the Invisible, Visible**

This residency is perfect for those interested in combining art, science and technology to reveal something of the invisible world, perhaps to create something tangible, or experiential that would otherwise be hidden from view. This resident will explore a project around 'Making the Invisible, visible'.

This resident will be supported and mentored by former Pervasive Media Studio residents Interactive Scientific (iSci) (<http://interactivescientific.com/>), creators of the multi-award winning danceroom Spectroscopy and Nano Simbox. iSci are an inter-disciplinary team with a wealth of experience, enthusiasm and expertise in creating immersive experiences, interactive learning environments and experimenting with emerging technologies in creative ways to bring hidden worlds to life.

#### **New Talent residency two and three: Open call**

These residencies have an open brief and we are interested in any project that you feel would benefit from being developed within the Pervasive Media Studio community. Your ideas will probably fall into one or more of the following:

- Interaction/Experience design
- Games design and play
- Food and dining experiences
- Internet of Things
- Immersive Theatre
- Interactive Documentary
- Digital Storytelling
- Architecture and city design
- Wearable technologies
- Location and movement
- Robotics and A.I.

Once the successful candidates for these two open residencies have been selected, we will identify a relevant mentor from the Studio community to support each of the open call residencies.

If you are not sure which residency is the best fit for you and your ideas, we would recommend that you book in to one of our open sessions (see below), or contact Projects Coordinator Rachael Burton on [Rachael.burton@watershed.co.uk](mailto:Rachael.burton@watershed.co.uk)

## About you:

You have fantastic ideas and want to explore how to make them a reality. Perhaps you have been working on some things in your bedroom, in the shed, after work or at the weekends. Perhaps it's something that started for you at school, college or university that you haven't been able to pick up since you left. Or perhaps you've just never had access the time and resources, or to someone who can help you to get it off the ground?



*"there's a sense of security in that you can throw ideas around in this space and you know that those ideas will be treated with respect but will also be interrogated"*  
*Timothy X Attack, Artist in residence 2012*

You are at the early stages of your career, either just emerging from education or training, or in the process of pivoting your career to include some aspect of digital creativity. You may have spent a year or so exploring this space but have an open and curious approach to your ideas, and to the work of others within the Studio network.

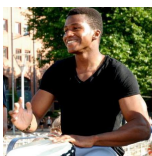
You have a specific idea or project that you would like to explore and develop with us in residence at the Pervasive Media Studio.

You must live and work in the United Kingdom.

We encourage applications from all people from all creative disciplines, and especially welcome applications from Deaf or disabled practitioners.

## Why join the Pervasive Media Studio?

Watershed has forged an unrivalled reputation for facilitating cross-disciplinary innovation at the intersection of culture, media and technology. Watershed's research and development space, the Pervasive Media Studio, run jointly with University of Bristol and the University of the West of England, works across the cultural and commercial sectors. We produce projects that include gaming, projections, location-based media, city interventions, connected objects and new forms of performance.



*"Being a part of the studio has been a fantastic experience for me so far, not only for my business as a start-up but also as an individual [...] I've had opportunities to meet interesting and creative people and also learn a lot about subjects that are outside of my area of study"*

*Silas Adekunle, Reach Robotics - Graduate and new talent resident 2014*

We have a resident community of incredible people with broad ranging skills and experiences who take an active interest in one another's ideas and activities, helping one another to fully explore their ideas.



*“While the funding was crucial in enabling me to create and produce a new concept, my relationship with Watershed and its enduring legacy of support for all its residents, has proved even more pivotal to sustaining my business long-term.”*  
Heidi Hinder – artist-maker and researcher - Craft + Technology resident 2013

We understand that creating the conditions for amazing work to thrive is not as simple as gathering together established experts. Those at the start of their careers will often ask the questions and experiment with untested forms in ways others hadn't even considered and in the Studio we welcome people at the start of their careers, as much as those who are more advanced in their practice. This helps us all to look at what we are doing with fresh eyes.

### What do we expect of you?

- An open and curious approach to your own practice and in the work of others
- Enthusiasm and ambition to grow and develop your practice
- A generous approach to supporting your peers in the residency programme
- Full participation in the opening week (Tue 5 July – Fri 8 July 2016)
- Participation in fortnightly cohort meet ups
- Attendance at (minimum) monthly meetings with your mentor
- Your presence in the Studio a minimum of 3 days per week for the duration of the residency
- A weekly blog documenting your ideas and progress throughout the process

### How to apply:

To apply, complete the application form provided, and return to Projects Coordinator Rachael Burton [rachael.burton@watershed.co.uk](mailto:rachael.burton@watershed.co.uk) by 10am BST Fri 13 May 2016. We know that forms don't suit everyone, so if you would like to apply in a different format, contact [verity.mcintosh@watershed.co.uk](mailto:verity.mcintosh@watershed.co.uk) to discuss alternatives.

To find out more about who we are and what we do visit [pmstudio.co.uk](http://pmstudio.co.uk). If you wish to visit us in person, contact [admin@pmstudio.co.uk](mailto:admin@pmstudio.co.uk) to arrange to join one of our weekly tours at 12:30 on Friday. These form a part of our Open Studio Friday offer (booking for tours is essential). After the tour you can join us for a free talk and hotdesk in the Studio to get a feel for how things work: <http://www.watershed.co.uk/pmstudio/open-studio-friday>

If you would like to talk to someone in more detail about you eligibility, share some early thinking on a project you think might be suited, or ask us some questions, we will be holding some open sessions at the Studio on Wed 30 March and Tues 26 April. To book some time on either date, please contact [Rachael.burton@watershed.co.uk](mailto:Rachael.burton@watershed.co.uk)

### Timeline

Tue 23 Feb	Open for applications
Wed 30 Mar	Bookable sessions (for questions about the application process)
Tue 26 Apr	Bookable sessions (for questions about the application process)
Fri 13 May	Deadline for applications, 10am BST

Fri 20 May	Shortlisted applicants notified
Tue 31 May	Interviews
Wed 1 June	Interviews
5 – 8 July	Kick off week of activity and introductions
5 July – 30 Sept	Residency programme

***New Talent residencies 2016 is a Watershed programme, in partnership with Interactive Scientific. Watershed is supported by Arts Council England.***

### **About Watershed**

Watershed is a cross-artform producer, sharing, developing and showcasing exemplary cultural ideas and talent. Curating ideas, spaces and talent, Watershed enables artistic visions and creative collaborations to flourish. Watershed is rooted in Bristol but places no boundaries on its imagination or desire to connect with artists and audiences in the wider world.

<http://www.watershed.co.uk>

### **About Interactive Scientific**

Former Pervasive Media Studio residents iSci work to create meaningful digital aesthetics and immersive experiences. We use optimised computing to visualise data and make the invisible visible. With expertise in interaction, we take digital experiences away from the mouse and keyboard and make tactile human-computer experiences.

The growing team is made up of a number of multidisciplinary experts with a passion for education, science and pleasing digital experiences. We work with clients across sectors to create digital experiences.

[interactivescientific.com](http://interactivescientific.com)

### **About Arts Council England**

Arts Council England champions, develops and invests in artistic and cultural experiences that enrich people's lives. They support a range of activities across the arts, museums and libraries - from theatre to digital art, reading to dance, music to literature, and crafts to collections.

Between 2010 and 2015, they have invested £1.9 billion of public money from government and an estimated £1.1 billion from the National Lottery in arts and culture to help create experiences for as many people as possible across the country.

<http://www.artscouncil.org.uk>

**WATERSHED**



*i Sci*  
Interactive  
Scientific



Supported using public funding by  
**ARTS COUNCIL  
ENGLAND**