

WATERSHED

Visual Story for Relaxed Screenings

We hope this Visual Story will assist in the preparation of your visit to Watershed and help you to become familiar with the new surroundings.

If you have any questions regarding your visit, please ask a member of staff on the day or get in touch using one of these methods:

Email: info@watershed.co.uk

Telephone: 0117 927 5100



Address: 1 Canons Road, Harbourside, Bristol, BS1 5TX

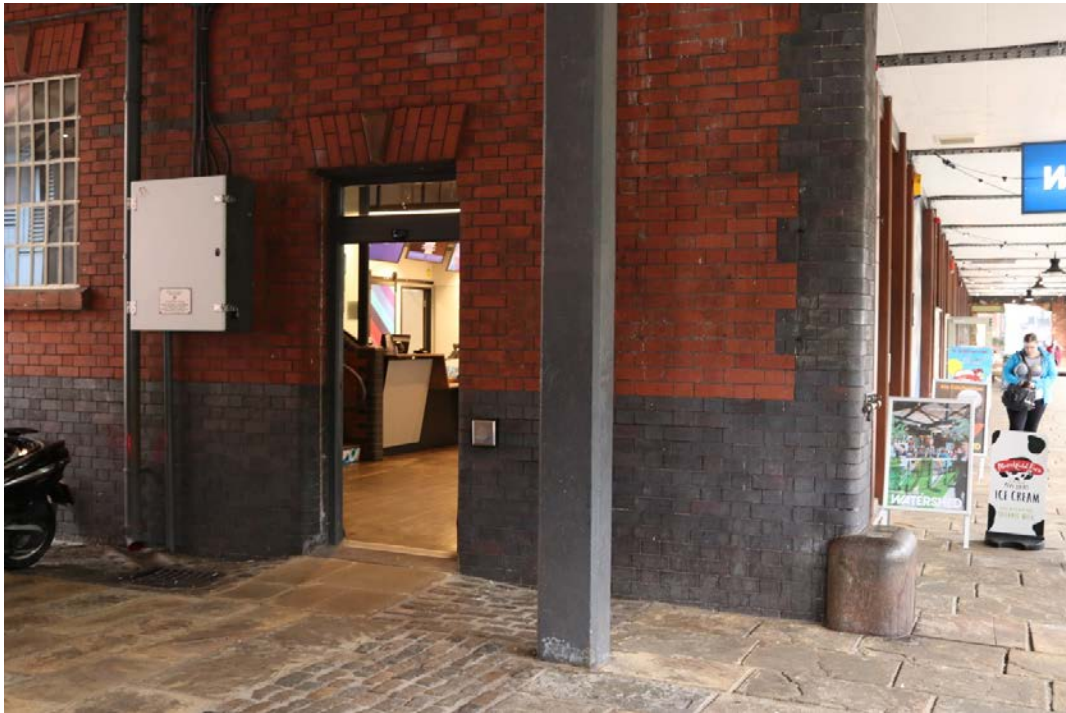
Welcome to Watershed, home to three cinemas, the Pervasive Media Studio and a Café & Bar on Bristol's harbourside.



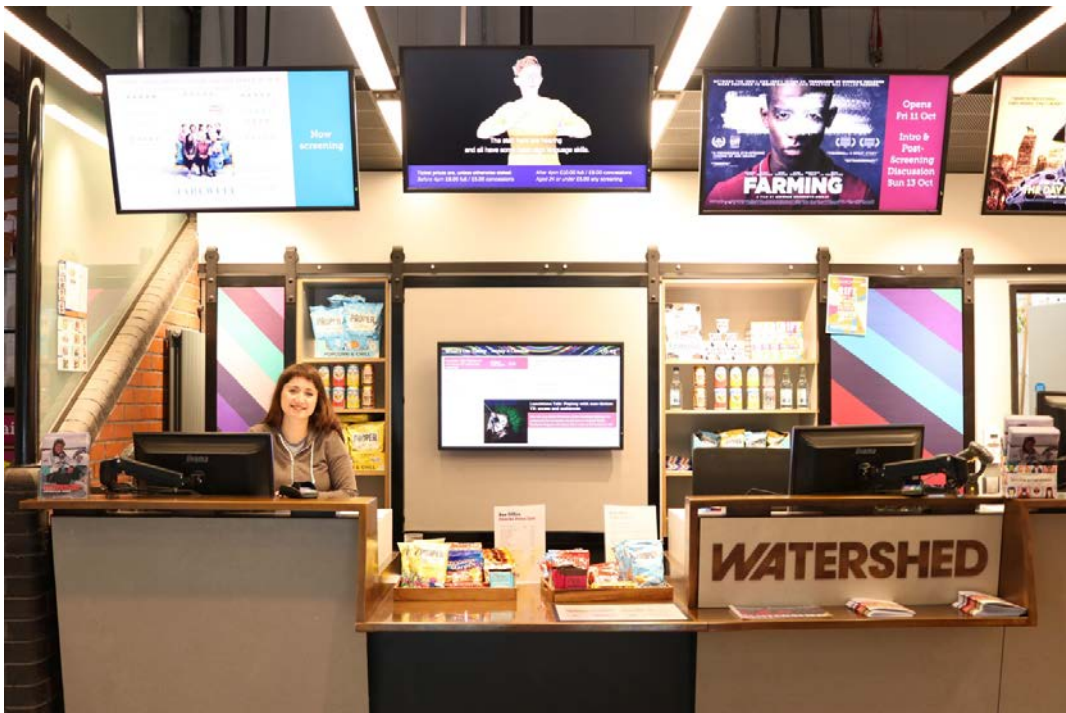
There are two entrances into the building; the main Box Office entrance using the walkway next to the harbourside.



And a ramped, electronically assisted entrance door to the side of the building.



You can collect your tickets from the Box Office and if you fancy some sweets and drinks for the film, you can buy them here.



If you have your ticket already, you can go straight up the flight of stairs.



Or you can get a lift to the first floor.



When you arrive upstairs you will see the Welcome Desk.



If you want to go straight into the Cinema, stand by the Welcome Desk and a member of staff will check your tickets and show you the way. Cinema doors are opened 20 minutes before the film.



You are also welcome to buy some food, snacks or drinks from our Café & Bar. You can take snacks and drinks in with you to watch the film.



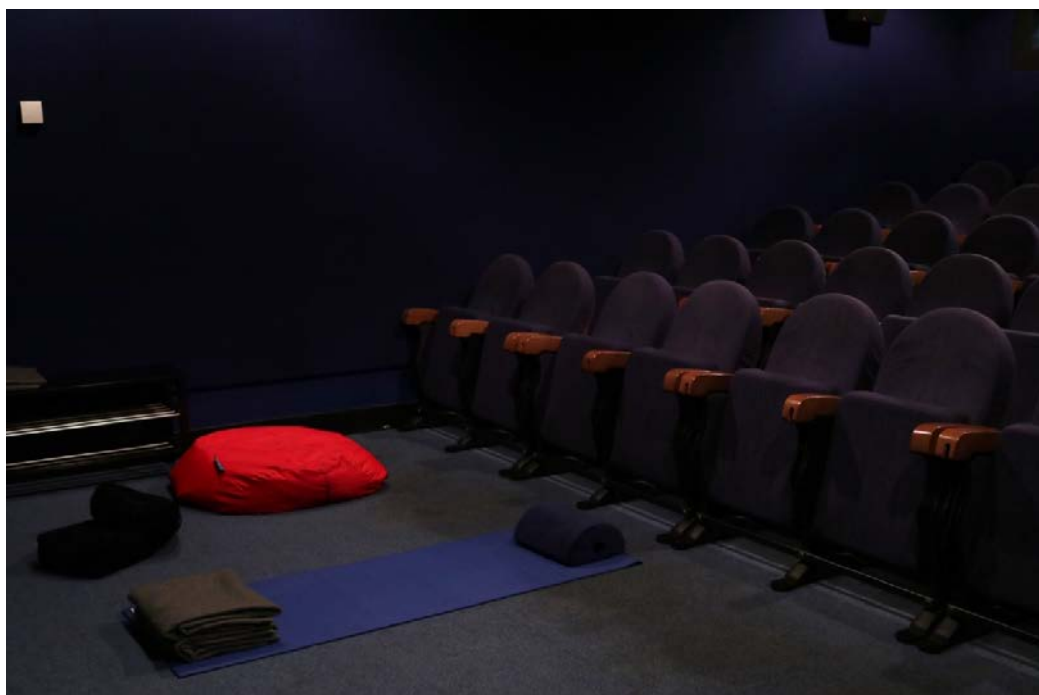
If you need the toilet before or during the film, there is an accessible inclusive toilet right next to the cinema.



Once you are in the cinema, you will notice there are lots of seats. You can sit wherever you want and feel comfortable. You can even sit on the floor if you want as there are mats available, just ask a member of staff.



Sometimes parts of the film will be loud. If the sound bothers you or you'd like some space outside the cinema, just let a member of staff know and they will direct you to a quiet space with bean bags to sit on and some sensory toys.



In an emergency, there will be a member of staff guide you to the nearest exit.

If you have a question when you are at Watershed, you can ask anyone wearing a Watershed lanyard or a smiley face on their top.



See you soon!